

TEPA KNOB

ARCHITECTURAL SPECIFICATIONS

MATERIAL: ZINC ALLOY 5



- | | | | |
|--|--|---|---|
| <ul style="list-style-type: none">• PART NUMBER:
TEPA-KNOB-SN• FINISH (STANDARD):
Satin Nickel• FINISHING PROCESS:
Electroplating | <ul style="list-style-type: none">• PART NUMBER:
TEPA-KNOB-MB• FINISH (PREMIUM):
Matte Black Munsell N2• FINISHING PROCESS:
Electrodeposition Coating | <ul style="list-style-type: none">• PART NUMBER:
TEPA-KNOB-MW• FINISH (PREMIUM):
Matte White Munsell N9• FINISHING PROCESS:
Epoxy Painting | <ul style="list-style-type: none">• PART NUMBER:
TEPA-KNOB-SG• FINISH (PREMIUM):
Satin Gold Pantone #871C• FINISHING PROCESS:
Epoxy Painting |
|--|--|---|---|

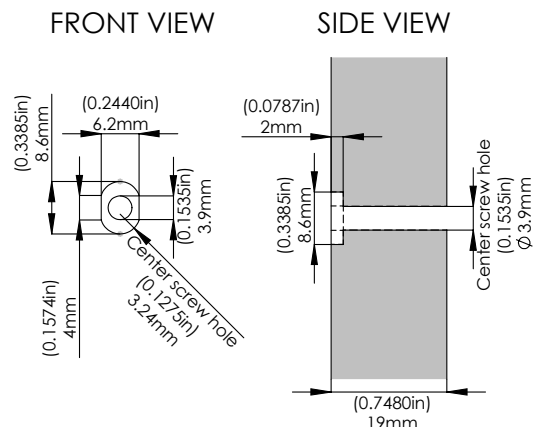
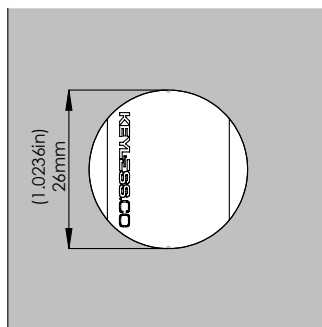
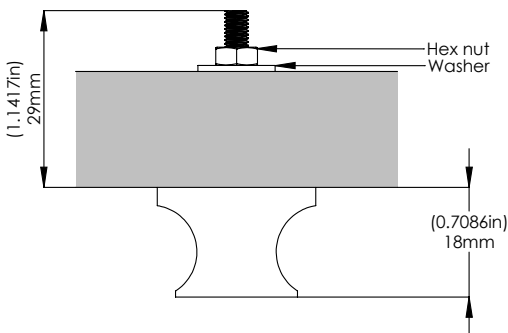
10% color discrepancy, and custom pricing options apply.

- **MATERIAL:** Zinc Alloy 5
- **FINISHES:** Satin Nickel, Matte Black, Matte White, Satin Gold
- **FIT:** door thickness minimum 1mm and maximum 25mm
- **TESTED:** Rust-resistant and perfect for humid environments
- **CLEANING:** When disinfecting, mist with at least 70% alcohol solution in order to maintain product integrity
- **NON-SLIP GRIP:** ergonomic for ease of opening locker

TOP VIEW

FRONT VIEW

DOOR ROUTING



Manufactured By:

KEYLESS.CO

1825 W. Walnut Hill Ln., Suite 102, Irving, TX 75038, USA | +1 972-331-2770 | info@keyless.co | www.keyless.co | V: 3/4/2021